

SHARE:

[Join Our Email List](#)



The following newsletter describes the activities of ASHRAE Central Arizona Chapter 086 and does not present official positions of the Society nor reflect Society policy. ASHRAE chapters may not act for the Society, and the information presented here has not had its review.

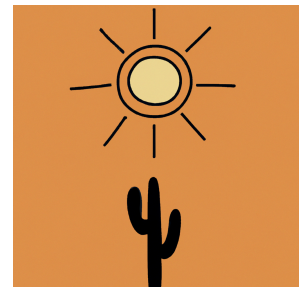


Chapter Newsletter  
December 2024

### **Welcome New Chapter Members!**

#### **Welcome**

A warm and enthusiastic welcome to our vibrant community! We are thrilled to have you join ASHRAE's Central Arizona Chapter, where innovation, collaboration, and expertise converge to shape the future of the HVAC&R industry.



#### **Our New Members**

November 1 to 30

## Full Members

John Libby  
David A McGowan, PE

## Associate Members

Farhad Akhudzadeh  
Brooke D Haynes  
Trevor Kraayenbrink  
Brianna N Moore

## Grade Advancement

The requirements are that a Member has the equivalent of 12 Society-approved years of experience composed of an approved combination of:

- completed education beyond high school
- work experience
- professional engineering or related registration or license issued by a legally authorized body

To advance from Associate to Member, you must update your ASHRAE bio online, and notify **membership@ashrae.org** you have an updated bio and wish to be considered for grade advancement.

Tips for updating bios:

1. Log into **www.ashrae.org** by selecting 'Join or Login' in the upper right corner. Enter your email and password and select 'Sign In'.
2. Select 'My Account' in the upper right corner of the homepage.
3. Select the 'Biographical Information' tab along the top tab options. Add all educational degrees, work history, and relevant professional licenses.
4. Confirm that your contact information is current by selecting 'Contact Info'

## Opportunities to Volunteer!

Chapter's Board Positions:

- President
- President-Elect
- Treasurer
- Past-President
- At-Large Members

Chapter's Chair Positions:

- Chapter Technology Transfer
- Honors and Awards
- Membership Promotion
- Young Engineers in ASHRAE
- Government Affairs

Chapter's Committees:

- Communications
- Golf Tournament
- Intro to HVAC
- K-12 / STEM
- Newsletter
- Tabletop
- Trapshoot
- Webmaster

As the ASHRAE year (July 2024 through June 2025) progresses, this newsletter will include links and articles that provide details about the Chair and Committee positions.

**All of the chapter's Chairs and Committees are looking for volunteers.** The Central Arizona chapter is very active and requires many volunteers.

**This link lists** many of the chapter's volunteers.

Please consider volunteering.

## Chapter Events

(1 of 5)

December Chapter Meeting--Lunch  
**Code Updates: The 2024 IECC and IMC**  
Tuesday, December 3, 2024

Meeting Location

**SkySong 3, Synergy Conference Center**  
The ASU Scottsdale Innovation Center  
1365 N Scottsdale Road, Scottsdale, AZ 85257

**([Link to Register](#))**

JOIN THE ASHRAE CENTRAL ARIZONA CHAPTER

# CHAPTER MEETING



**DECEMBER 3RD, 2024 • 11:30AM**

**ASU SKYSONG - BUILDING 3 - SYNERGY ROOM**

1365 N SCOTTSDALE RD

SCOTTSDALE, AZ 85257

**RESOURCE PROMOTION DAY**

Sponsored by:



## CODE UPDATES: THE 2024 IECC AND IMC: THE GOOD, THE BAD, AND THE UGLY

THE 2024 INTERNATIONAL MECHANICAL CODE, AND 2024 INTERNATIONAL ENERGY CONSERVATION CODE WILL TAKE EFFECT IN SEVERAL JURISDICTIONS IN THE PHOENIX-METRO IN 2025. THIS PRESENTATION WILL COVER SOME KEY CHANGES & UPDATES.

**COME FOR THE EDUCATION, STAY FOR THE TRIVIA!** USING THE KAHOOT! APP, A SHORT TRIVIA CONTEST WILL BE HELD AT THE END FOR PRIZES.

### **PRESENTER:**

**COLIN LAISURE-POOL, PE  
ACCOUNT EXECUTIVE - MPSW**

COLIN IS A 3RD-GEN PHOENICIAN, SCOTCH 'ENTHUSIAST', FORMER DESIGN ENGINEER, AND DETROIT LIONS FAN.

OH, AND HE DOES A LOT OF ASHRAE STUFF:

- REGION X RMCR (2023-2026)
- CENTRAL AZ CHAPTER GAC CHAIR
- ALL-TIME LEADER IN ASHRAE PRESENTATIONS GIVEN TO CENTRAL AZ CHAPTER (DISPUTED)



(2 of 5)

Holiday Social

Thursday, December 12, 2024

Event Location

**Pedal Haus Brewery Downtown**

Rooftop Bar

214 E Roosevelt Street, Phoenix, AZ 85004

[\(Link to Register\)](#)



2024 CAZ ASHRAE



# HOLIDAY SOCIAL



DECEMBER | 12 | AT 6:00 PM



WHITE ELEPHANT RAFFLE PRIZES (ONE ENTRY PER GUEST)  
APPETIZERS AND DESSERTS PROVIDED  
2 DRINK TICKETS PER ASHRAE MEMBER

Pedal Haus Brewery Downtown  
214 E Roosevelt St | Phoenix, AZ 85004  
Find us upstairs at the rooftop bar!

RSVP BY

❄️ 12/9/24



(3 of 5)

Clay Shoot

Thursday, January 30, 2025

Event Location  
**Ben Avery Shooting Facility**  
Clay Target Center  
5060 W Skeet Street, Phoenix, AZ 85086

[\(Link to Register\)](#)



## ANNUAL CLAY SHOOT

### JANUARY 30TH

Get ready to take aim and enjoy a day of friendly competition. Whether you are a seasoned shooter or a beginner, this event welcomes all experience levels.

You are welcome to bring your own firearm (12 Ga) or you'll have the option to rent one from Ben Avery.

### Sponsorships



#### Tournament Sponsor \$1,500

- Showcased Premium Banner Display
- Recognition on the Website and Social Media
- Registration for 5 shooters



#### Dinner Sponsor \$1,250

- Showcased Premium Banner Display
- Recognition on the Website and Social Media
- Registration for 4 shooters



#### Ammo & Clay Sponsor \$1,000

- Showcased on Custom Sign
- Recognition on the Website and Social Media
- Registration for 3 shooters



#### Range Sponsor \$800

- Showcased on Custom Sign
- Recognition on the Website and Social Media
- Registration for 2 shooters

Sponsorships are available for purchase at [ASHRAECENTRALAZ.COM/EVENTS/](http://ASHRAECENTRALAZ.COM/EVENTS/)



### OVERVIEW

#### Schedule

- 1:00 PM - Registration
- 2:00 PM - Mandatory Safety Briefing
- 2:30 PM - Tournament Begins
- 4:00 PM - Dinner

#### Where

- 5060 W Skeet St, Phoenix, AZ 85086
- Register at the Pavillion

#### Cost

- \$150 per Shooter

#### Included

- Dinner
- Firearm Rental (May Bring Your Own)
- Ammo 12 Ga
- Clays
- Safety Briefing
- Ear & Eye Protection
- Raffle Entry (One Per Person)

#### What To Bring

- Sunglasses and hats are recommended

Register by January 27th at [ASHRAECENTRALAZ.COM/EVENTS/](http://ASHRAECENTRALAZ.COM/EVENTS/)

**Questions?**

Contact Veronica Bittl at 623-208-2718 or [VeronicaB@VaritecSolutions.com](mailto:VeronicaB@VaritecSolutions.com)

(4 of 5)

Tabletop Product Show  
Wednesday, March 12, 2025

Event Location

**Desert Botanical Gardens**  
1201 N Galvin Parkway, Phoenix, AZ 85008

[\(Link to Register\)](#)



**30<sup>th</sup> ANNUAL  
TABLETOP  
PRODUCT SHOW**

**MARCH 12, 2025**

**3 PM - 7 PM**

**VENDORS: REGISTRATION  
NOW OPEN. REGISTER BY 1/10/25  
TO GET THE EARLY BIRD DISCOUNT!**

**DESERT BOTANICAL GARDENS  
1201 N GALVIN PKWY  
PHOENIX, AZ 85008**

**JOIN US FOR OUR 30TH ANNUAL TABLETOP PRODUCT SHOW, WHERE YOU CAN  
ATTEND WORKSHOPS LED BY INDUSTRY EXPERTS AND EXPLORE A  
TRADESHOW FULL OF PRODUCTS AND SERVICES. NETWORK AND ENJOY A  
LIGHT DINNER AND RAFFLE PRIZES**


**MORE INFORMATION: [HTTPS://ASHRAECENTRALAZ.COM/](https://ASHRAECENTRALAZ.COM/)**

(5 of 5)


What's Ahead?

16  
Dec

### ASHRAE GCC Meeting

 108 N 40th St, Phoenix, AZ  
85034 [VIEW ON MAP](#)

 16-12-2024


 05:00 pm - 06:00 pm

 America/Phoenix


[READ MORE](#)

07  
Jan

### January Chapter Meeting

 Radisson Hotel Phoenix  
Airport, 427 N 44th St, Phoenix, AZ  
85008, USA [VIEW ON MAP](#)

 07-01-2025

 05:30 pm - 07:00 pm

 America/Phoenix

[READ MORE](#)

13  
Jan

### WiA Postinos Board & Bottle Happy Hour

 13-01-2025

 All Day Event

[READ MORE](#)

from ASHRAE

(1 of 2)



We want to hear from you.

Your feedback makes ASHRAE better. Please take 5 minutes to tell us what you like, and share your opinion.

[Take our brief survey](#)

(2 of 2)



ASHRAE Central AZ Chapter | PO Box 66904 | Phoenix, AZ 85082 US

[Unsubscribe](#) | [Update Profile](#) | [Constant Contact Data Notice](#)



Try email marketing for free today!